

OMC Costruzioni Meccaniche

di Caprella Giuseppe Antonio & Figli

Via Brodolini, 4 - 50063 Figline Valdarno - Firenze (Italy)

Tel. 0039.055.9154005 - 9154968 - Fax 0039.055.9154968

www.omccaprella.it - omc@omccaprella.it



Catalogo Fondi Gommati


Rubber Base Catalogue

Catalogue des Fonds de Gomme

Каталог основание в резине

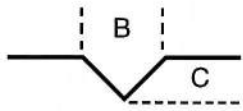
Catálogo Fondos de Goma



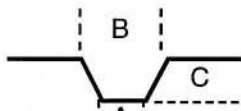


STAMPI
MOULDES 600x400
MOLDES

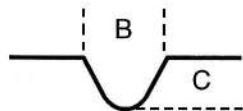




Canale a "V"
"V" Channel
Canal en punta



Canale Trapezoidale ("W")
Trapezoidal Channel
Canal Trapezoidal



Canale Rotondo ("R")
Round Channel
Canal Redondo



Canale bordo Rotondo ("BR")
Round Edge Channel
Canal Convexo

L= Larghezza disegno
L= Measure design
L= Longitud del dibujo

21/34 600x400



L=595X395

A	B	C	D	E
		4,5		

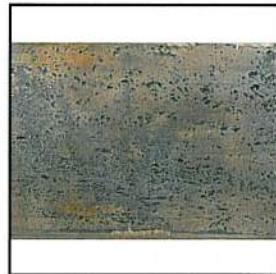
50 600x400



L=396X596

A	B	C	D	E
		5,5		

54 600x400



L=594X394

A	B	C	D	E

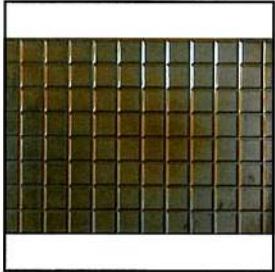
100 600x400



L=597X397

A	B	C	D	E
3	9	3		

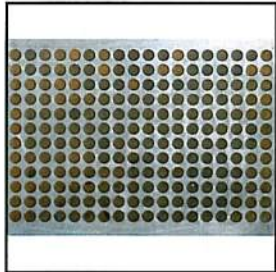
2079 600x400



L=597X397

A	B	C	D	E
	10	2,5		

2085 600x400



L=594X394

A	B	C	D	E
		2		

2086 600x400



L=396X596

A	B	C	D	E
4	15	6		

2087 600x400



L=598X398

A	B	C	D	E
		18		

3010/3 600x400



L=598X398

A	B	C	D	E

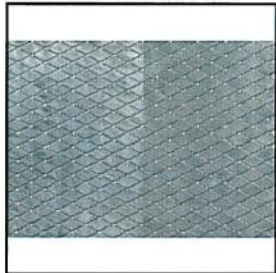
3205/7 600x400



L=580X380

A	B	C	D	E
		6		

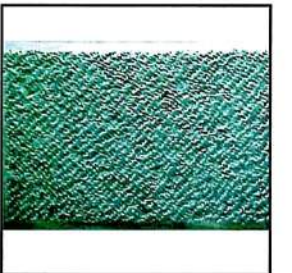
3242 600x400



L=598X398

A	B	C	D	E
		4/1,5		

3243 600x400



L=395X595

A	B	C	D	E
3	7	4		

3245 600x400



L=592X396

A	B	C	D	E
	7,8	4,5		

3246 600x400



L=598X398

A	B	C	D	E
		5		

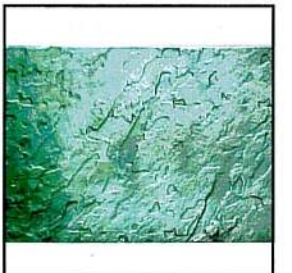
3250 600x400



L=596X393

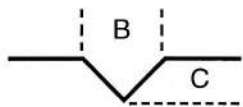
A	B	C	D	E
		3,5		

3251 600x400

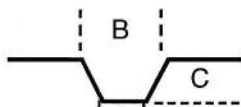


L=596X393

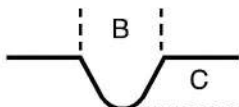
A	B	C	D	E



Canale a "V"
"V" Channel
Canal en punta



Canale Trapezoidale ("W")
Trapezoidal Channel
Canal Trapezoidal



Canale Rotondo ("R")
Round Channel
Canal Redondo



Canale bordo Rotondo ("BR")
Round Edge Channel
Canal Convexo

L= Larghezza disegno
L= Measure design
L= Longitud del dibujo

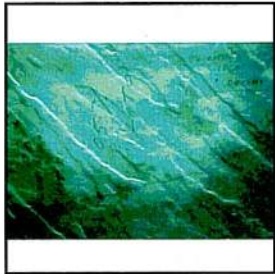
3253 600x400



L=594X394

A	B	C	D	E
4	11	6		

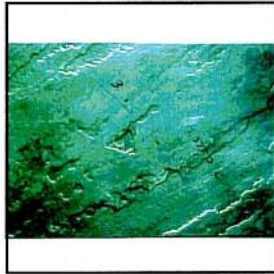
3254 600x400



L=594X394

A	B	C	D	E

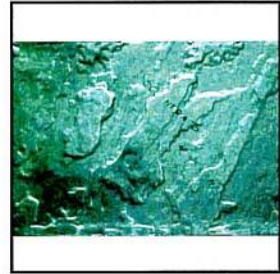
3256 600x400



L=594X394

A	B	C	D	E

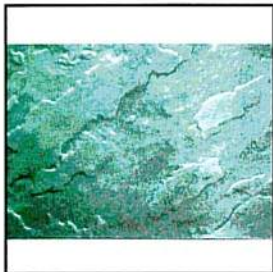
3257 600x400



L=594X394

A	B	C	D	E

3258 600x400



L=594X394

A	B	C	D	E

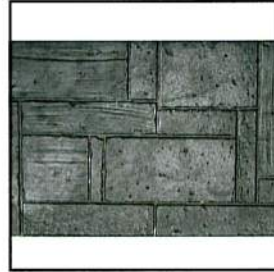
5099 600x400



L=580X380

A	B	C	D	E
		6		

5485 600x400



L=594X394

A	B	C	D	E
7	8	C		